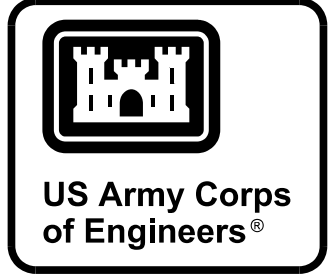




B1 SITE PLAN
SCALE: 1" = 100'

GENERAL NOTES

1. A 12" HDPE PIPE IS ASSUMED FOR THE SLURRY AND RETURN PIPES.



MARK	DESCRIPTION	DATE

DESIGNED BY: FAVELEFLER, P.E. D. J. FAVELE CHECKED BY:	ISSUE DATE: JULY 2016	SOLICITATION NO.:	CONTRACT NO.:	PROJECT CODE:
SUBMITTED BY: JOHN GROBOSKI, P.E. SIZE: ANSI X FILE NAME: CS103.dgn				

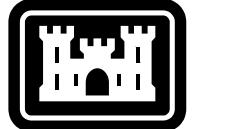
U.S. ARMY CORPS OF ENGINEERS
CHICAGO DISTRICT
231 SOUTH LASALLE STREET, SUITE 1500
CHICAGO, IL 60604

CEDAR LAKE DREDGING
SECTION 206
DRAINAGE IMPROVEMENTS
CEDAR LAKE, INDIANA

SHEET ID
CS103

GENERAL NOTES

1. ADDITIONAL DREDGING WILL BE PERFORMED IN THE LAKE, ADJACENT TO THE STAGING/OFFLOADING AREA, FOR EQUIPMENT ACCESS TO THE LAKE.
2. A 12"HDPE PIPE IS ASSUMED FOR THE SLURRY AND RETURN PIPES. THE PIPE WILL BE PLACED UNDER THE LAUERMAN ST TO THE OFFLOADING AREA.
3. REFER TO THE MAIN REPORT FOR THE DREDGING AND NATIVE ESTABLISHMENT LIMITS WITHIN CEDAR LAKE.



US Army Corps of Engineers

MARK	DESCRIPTION	DATE

DESIGNED BY: FAVELEFLER, P.E.	ISSUE DATE: JULY 2016
DRAWN BY: D. BANNARD	SOLICITATION NO.:
CHECKED BY:	CONTRACT NO.:
SUBMITTED BY: JOHN GROBOSKI, P.E.	PROJECT CODE:
SIZE: ANSI X	FILE NAME: CS104.dgn

U.S. ARMY CORPS OF ENGINEERS
CHICAGO DISTRICT
231 SOUTH LASALLE STREET, SUITE 1500
CHICAGO, IL 60604

CEDAR LAKE DREDGING
SECTION 206
DRAINAGE IMPROVEMENTS
CEDAR LAKE, INDIANA

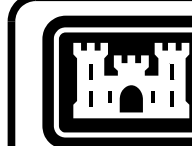
SITE PLAN

SHEET ID
CS104



GENERAL NOTES

- FOUNDERS CREEK WILL BE REROUTED AS SHOWN AND THE RIPARIAN CORRIDOR RESTORED WITH NATIVE ESTABLISHMENT. FOUNDERS CREEK CONNECTION WITH CEDAR CREEK WILL BE FILLED WITH EXCESS EXCAVATED MATERIAL.
- TWO 36" BOX CULVERTS WILL BE PLACED AT LAKESHORE DRIVE FOR FOUNDERS CREEK FLOW TO THE CEDAR LAKE.
- REFER TO THE MAIN REPORT FOR THE DREDGING AND NATIVE ESTABLISHMENT LIMITS WITHIN CEDAR LAKE.



US Army Corps of Engineers®

DATE	DESCRIPTION	MARK

DESIGNED BY: FAVELELLER, P.E.	ISSUE DATE: JULY 2016
DRAWN BY: D. BARNHART	SOLICITATION NO.:
CHECKED BY:	CONTRACT NO.:
SUBMITTED BY: JOHN GROBOSKI, P.E.	PROJECT CODE:
SIZE: ANSI X	FILE NAME: CS105.dgn

U.S. ARMY CORPS OF ENGINEERS
CHICAGO DISTRICT
231 SOUTH LASALLE STREET, SUITE 1500
CHICAGO, IL 60604

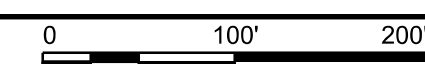
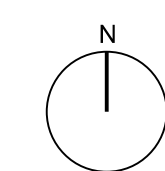
CEDAR LAKE DREDGING
SECTION 206
DRAINAGE IMPROVEMENTS
CEDAR LAKE, INDIANA

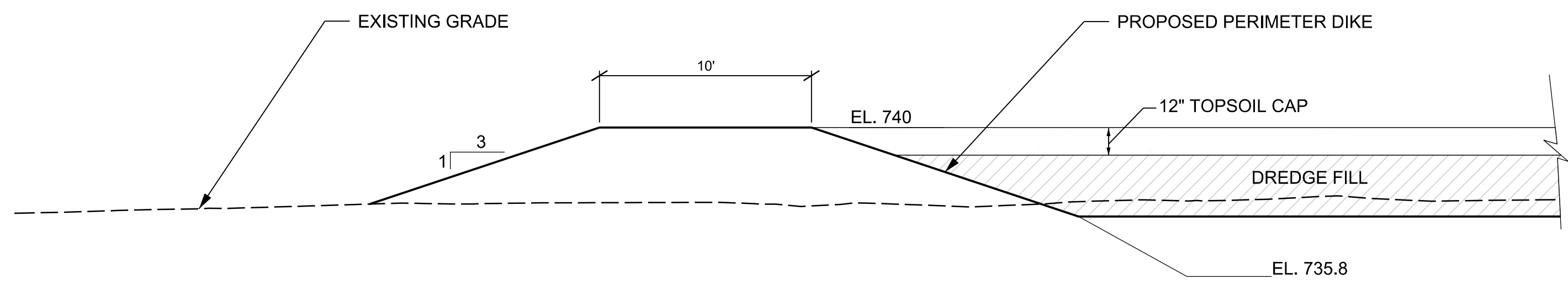
SITE PLAN

SHEET ID
CS105

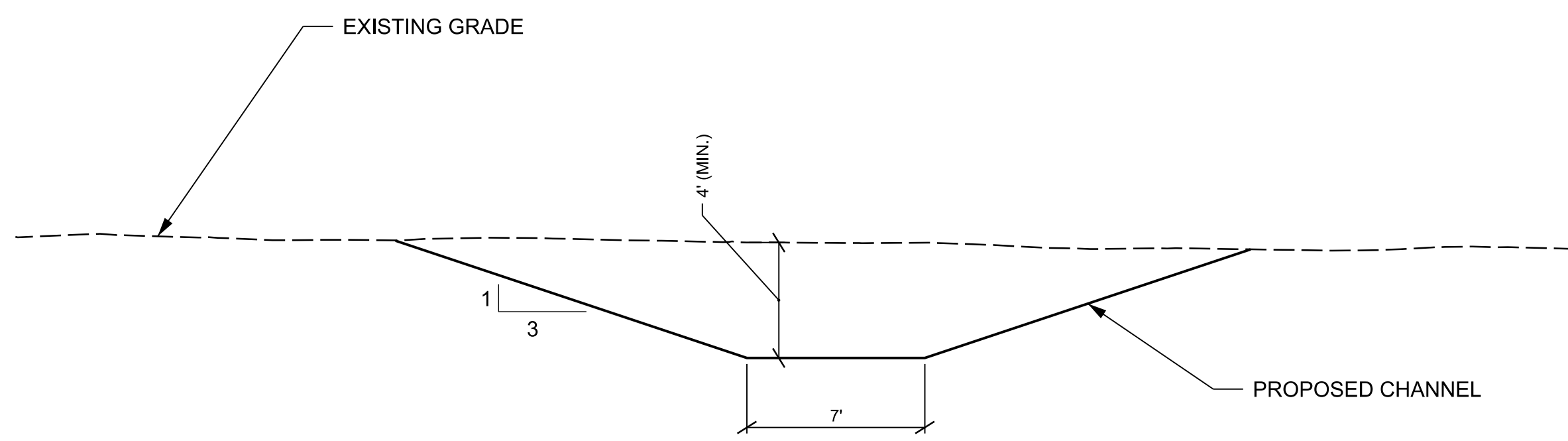


B1 SITE PLAN
SCALE: 1" = 100'

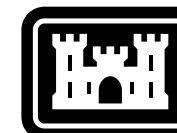




SDF PERIMETER DIKE TYPICAL SECTION



FOUNDER'S CREEK CHANNEL TYPICAL SECTION



US Army Corps of Engineers®

MARK	DESCRIPTION	DATE

DESIGNED BY: FAVELEFLER, P.E. DATE: 7/1/16	ISSUE DATE: JULY 2016
DRAWN BY: D. BANKHEAD	SOLICITATION NO.:
CHECKED BY:	CONTRACT NO.:
SUBMITTED BY: JOHN GROBOSKI, P.E.	PROJECT CODE:
SIZE: ANSI X	FILE NAME: C-301.dwg

CEDAR LAKE DREDGING SECTION 206 DRAINAGE IMPROVEMENTS CEDAR LAKE, INDIANA
 TYPICAL CROSS SECTION
 U.S. ARMY CORPS OF ENGINEERS
 CHICAGO DISTRICT
 CHICAGO, IL

SHEET ID
C-301