

ATTACHMENT 3

DRAWINGS

STANDARD ABBREVIATIONS

ACOE	ARMY CORPS OF ENGINEERS
CB	CATCH BASIN
CL	CENTERLINE
CJ	CONSTRUCTION JOINT
COR	CONTRACTING OFFICER'S REPRESENTATIVE
COE	CORPS OF ENGINEERS
CMP	CORRUGATED METAL PIPE
DIA.	DIAMETER
DBH	DIAMETER AT BREAST HEIGHT
DTM	DIGITAL TERRAIN MODEL
D.I.P.	DUCTILE IRON PIPE
EHH	ELECTRICAL HAND HOLE
EMH	ELECTRICAL MAN HOLE
ELEV	ELEVATION
EJ	EXPANSION JOINT
EN	EXTRACTION WELL
FF	FINISH FLOOR
FH	FIRE HYDRANT
GF	GRADE AT FOUNDATION
G.D.	GRATE DRAIN
G.M.H.	GRATED MANHOLE
HWL	HIGH WATER ELEVATION
H	HORIZONTAL
IDOT	ILLINOIS DEPARTMENT OF TRANSPORTATION
LCP	LOCAL CONTROL PANEL
MH	MANHOLE
MIN	MINIMUM
MW	MONITORING WELL
NGVD	NATIONAL GEODETIC VERTICAL DATUM
NWL	NATURAL WATER LINE
NAVD	NORTH AMERICAN VERTICAL DATUM
NTS	NOT TO SCALE
OSI	OCEAN SURVEYS, INC.
S	PIPE SLOPE
RCP	REINFORCED CONCRETE PIPE
SSP	STEEL SHEET PILE
TYP.	TYPICAL
VIF	VERIFY IN FIELD
V	VERTICAL
WLP	WELL POINTS
WL	WORK LIMIT
WP	WORK POINT

VERT./HORIZ. ALIGNMENT ABBREVIATIONS

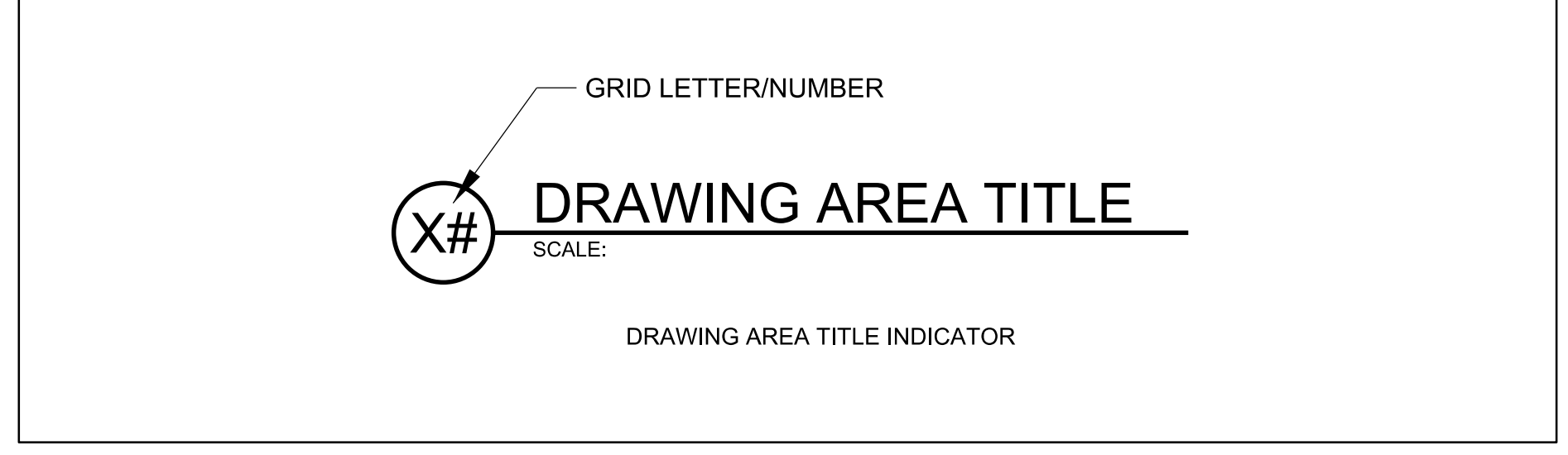
PI	POINT OF ELEVATION
PC	POINT OF CURVATURE
CC	CENTER OF CURVATURE
R	RADIUS
L	LENGTH
▲	DEFLECTION ANGLE
D	DEGREE OF CURVE
STA.	STATION
	HORIZONTAL CONTROL POINT
	HORIZONTAL & VERTICAL CONTROL POINT

LEGEND

LINE STYLES

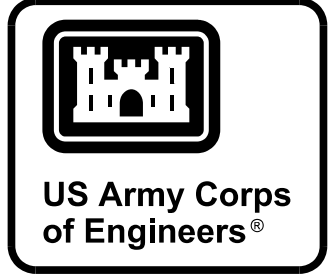
	FENCE		WORK LIMITS
	DESIGN CONTOUR		RAILROAD LINE
	EXISTING CONTOUR		TREELINE
	EDGE OF WATER		SLURRY PIPE
	DITCH ALIGNMENT		

SYMBOLS



GENERAL NOTES

1. THE HORIZONTAL DATUM IS BASED ON THE INDIANA STATE PLANE COORDINATE SYSTEM, WEST ZONE, NAD 1983, US SURVEY FEET.
2. THE VERTICAL DATUM IS BASED ON THE NORTH AMERICAN VERTICAL DATUM (NAVD) OF 1988, US SURVEY FEET.
3. THE ELEVATION DATA USED IS FROM GIS LIDAR DATA PROVIDED BY THE STATE OF INDIANA IN 2013 AND REPRESENT CONDITIONS EXISTING AT THAT TIME.



DATE	
MARK	
DESCRIPTION	

DESIGNED BY: FAVELEFLER, P.E.	ISSUE DATE: JULY 2016
DRAWN BY: D. BANNARD	SOLICITATION NO.:
CHECKED BY:	CONTRACT NO.:
SUBMITTED BY: JOHN GROBOSKI, P.E.	PROJECT CODE:
FILE NAME: G-002.dgn	ANSI X

U.S. ARMY CORPS OF ENGINEERS
CHICAGO DISTRICT
CHICAGO, IL

CEDAR LAKE DREDGING
SECTION 206
DRAINAGE IMPROVEMENTS
CEDAR LAKE, INDIANA

LEGEND, ABBREVIATIONS AND
GENERAL NOTES

SHEET ID
G-002

